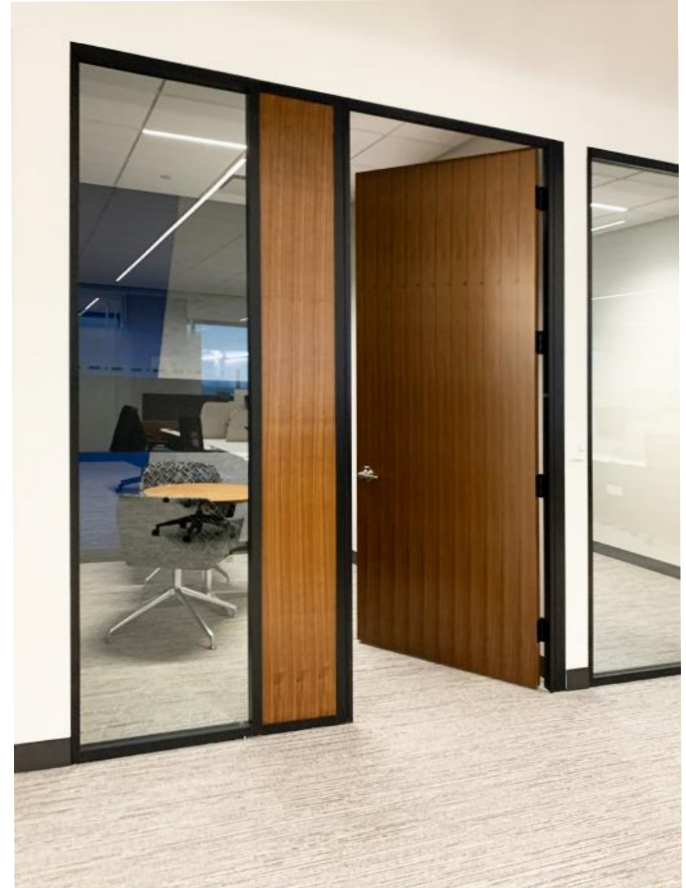


WOOD HINGE DOORS

- + 31 STC up to 50 STC available
- + Available with hold open or non-hold open hinges
- + Available with hold open or non-hold open closers
- + Available with ladder pulls, cylindrical or mortise lever sets, both locking and non-locking
- + Integrated frame stop with seals
- + Optional drop seal available
- + Engineered to order domestically with a 4-6 week lead time



© 2022 INFINIUM Wall Systems, Inc. All Rights Reserved.

STANDARD HARDWARE

WOOD HINGE DOORS

© 2022 INFINIUM Wall Systems, Inc. All Rights Reserved.

DOOR HARDWARE OPTIONS

CUSTOM HARDWARE SOLUTIONS

- + INFINIUM has a wide array of beautiful door hardware options that work with any of our wall systems. In addition to our standard offerings, we work with all major hardware manufacturers to provide you with an unlimited selection to fit your project needs. No matter what your requirements may be, our in-house team of engineers and project managers will work together to provide a custom hardware solution that's right for you.

STANDARD HARDWARE PACKAGE

INFINIUM PROPRIETARY HINGE

- + 4-1/2" x 4-1/2" Full Mortise Five Knuckle Ball Bearing Hinge
- + Two ball bearings
- + For use on medium weight doors or doors requiring medium frequency service
- + Complies with NFPA80 requirements for use on fire-rated door assemblies



INFINIUM PROPRIETARY CLOSER

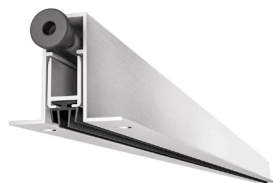
- + Concealed in door track arm closer
- + Designed to mount in a 1-3/4" thick interior door
- + Single lever arm and roller assembly provides complete concealment
- + Hold-open or non-hold open function available



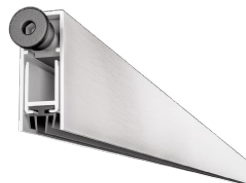
DROP SEALS

WOOD DOOR DROP SEALS

- + Available with many different combination of seals and plungers, this model can be fixed by the lateral wings with countersunk holes on the lower part of the aluminum profile. Its mechanism can be pulled out from both hinge and lock sides.



- + Available with many different combination of seals and plungers, this model guarantees a high efficiency. Its mechanism can be pulled out from both hinge and lock sides.



STANDARD HARDWARE

WOOD HINGE DOORS

© 2022 INFINIUM Wall Systems, Inc. All Rights Reserved.

CYLINDRICAL LEVER SETS

CYLINDRICAL PASSAGE LEVER SET

- + Field reversible - can be installed in a variety of locations
- + No locking function, free turning on both sides



CYLINDRICAL LOCK LEVER SET

- + Entrance/office lock
- + Push-button locking - push-button locks outside lever until unlocked with key or by turning inside lever
- + Inside lever is always free for immediate egress



MORTISE LEVER SETS

MORTISE PASSAGE LEVER SET

- + Field reversible - can be installed in a variety of locations
- + No locking function, free turning on both sides



MORTISE LOCK LEVER SET

- + Entrance/office lock
- + Push-button locking - push-button locks outside lever until unlocked with key or by turning inside lever
- + Inside lever is always free for immediate egress



STANDARD HARDWARE

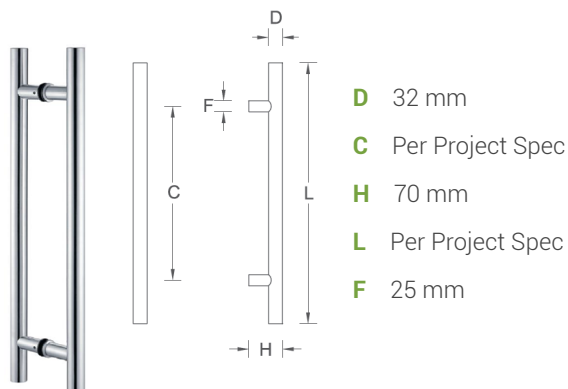
WOOD HINGE DOORS

© 2022 INFINIUM Wall Systems, Inc. All Rights Reserved.

LADDER PULLS

DPA 4000 NON-LOCKING LADDER PULL

- + With advance notification, the capability to swap non-locking with locking pulls can be achieved Day 2 utilizing non-locking pulls that accommodate the same size insert requirements for pull mounts on glass.

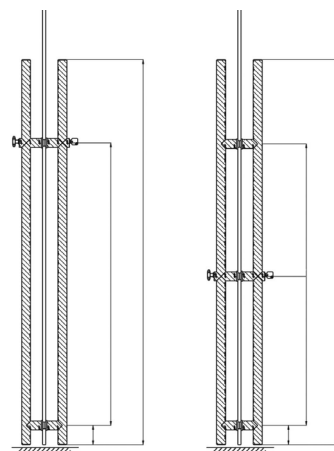


LDPA LOCKING LADDER PULL

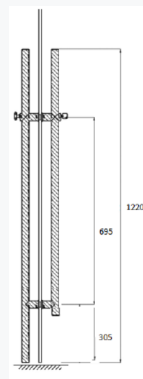
- + Heavy duty stainless steel construction
- + Key-operated from exterior; turnknob from interior
- + Accommodates door thickness 8-19mm range
- + 16mm steel deadbolt with 32mm throw
- + Floor locking standard, head and dual locking available
- + Bolt location: 64mm from face of door to centerline of bolt
- + Available in SFIC, side-bitted, or standard SC cylinder options

Item	B	A
LDP1-1200	925mm	1200mm
LDP1-1500	1250mm	1500mm

Item	C	B	A
LDP1-1800	925mm	725mm	1800mm
LDP1-2000	925mm	925mm	2000mm
LDP1-2400	1175mm	1075mm	2400mm



LDP1A13 (ADA)



STANDARD HARDWARE

WOOD HINGE DOORS

© 2022 INFINIUM Wall Systems, Inc. All Rights Reserved.

ELECTRIC | HIGH-SECURITY HARDWARE

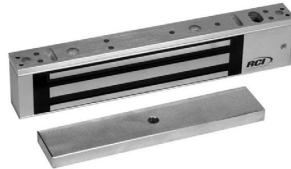
ELECTRIC STRIKE

- + Equipped with a mortise or cylindrical lockset with up to 3/4" latchbolt projection without deadbolt.
- + Electrical actuation unlocks the keeper, releasing the latchbolt so the door may be opened without operating the latch itself.



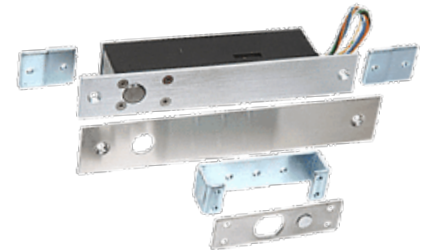
SURFACE-MOUNTED MAGLOCKS

- + 500 lbs. holding force
- + 750 lbs. holding force



CONCEALED OVERHEAD SOLENOID BOLT LOCK

- + Dual Monitoring Lock
- + Fully Automatic 12/24V DC Selection
- + Selectable Locking Time
- + CE Listed



ROOM SCHEDULERS

- + Upon specification, INFINIUM will help coordinate the installation of power for room schedulers and/or card readers provided by others, and integrate these features into our wall systems.