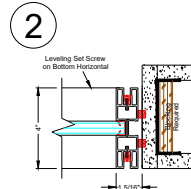
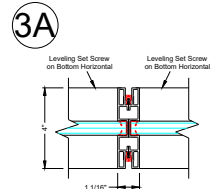


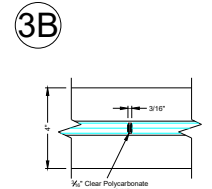
1 Recessed Wall Start



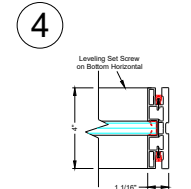
2 Flush Wall Start



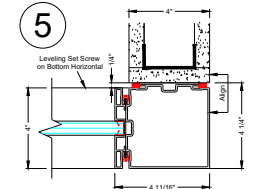
3A Panel Connection



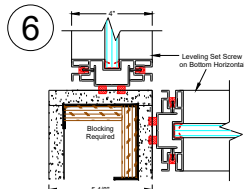
3B Butt Glazed Glass Connection



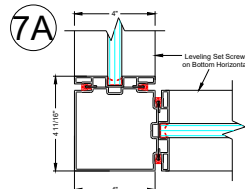
4 Finished End



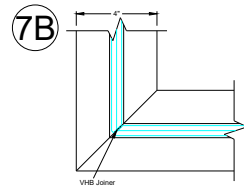
5 Finished End at Drywall Bypass



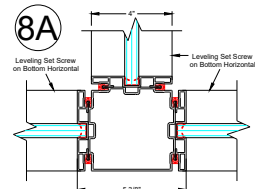
6 2-Way Connection at Drywall Corner



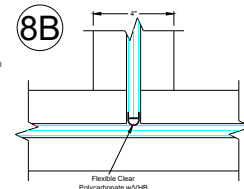
7A 2-Way Post



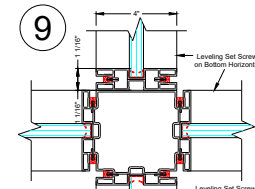
7B Butt Glazed Corner Connection



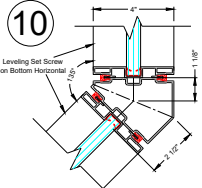
8A 3-Way Post



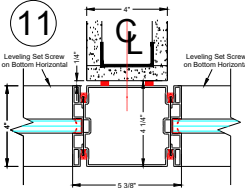
8B Butt Glazed 3-Way Connection



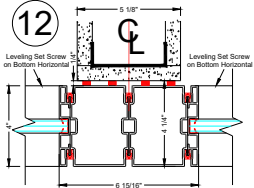
9 4-Way Connection



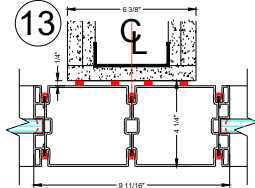
10 135 Degree Post



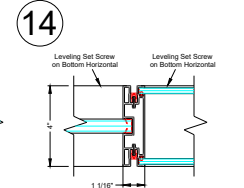
11 5" In-Line Post at 4" Drywall Bypass



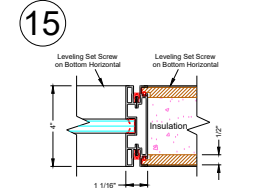
12 (2) 4" In-Line Posts at 5 1/8" Drywall Bypass



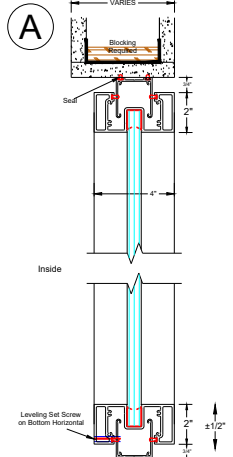
13 (2) 5" In-Line Posts at 6 3/8" Drywall Bypass



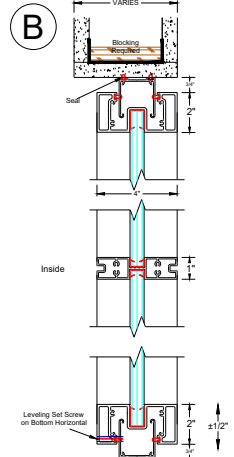
14 Single to Double Glazed Panel Connection



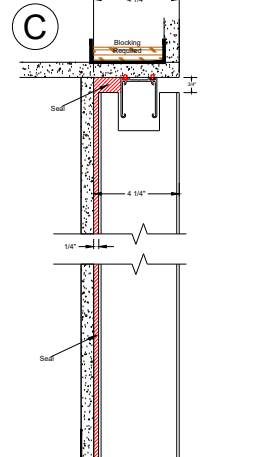
15 Single Glazed to Double Solid Panel Connection



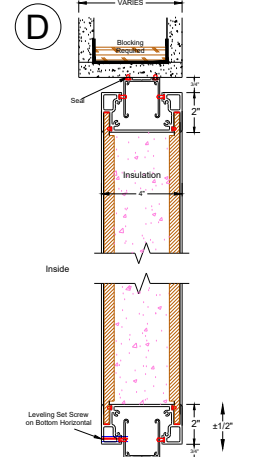
A Single Glazed Panel



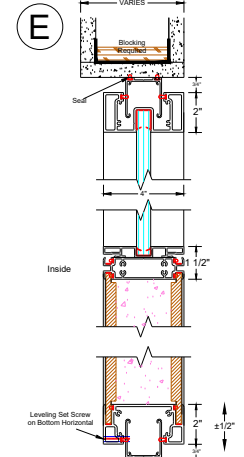
B Single Glazed Panel with Transom



C Post Condition @ Drywall Return



D Double Solid Panel



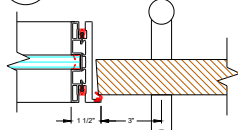
E Double Solid Panel with Glass Transom

Note : System shown flush to corridor side of soffit and sheetrock wall. System can also be setback or centered if so desired. Blocking required either way.

NO.	DATE	ISSUE/REVISION

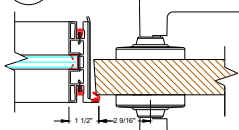
0

55A



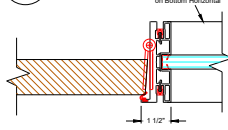
Panel to DF Keeper
Wood Hinge Dr

55B



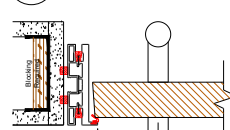
Panel to DF Keeper
Wood Hinge Dr

56



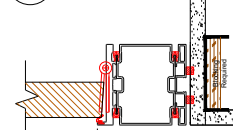
Panel to DF Hinge
Wood Hinge Dr

57



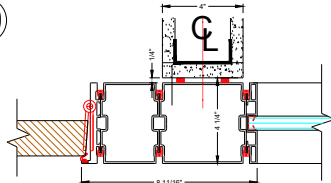
DF Keeper at Flush Start
Wood Hinge Dr

58



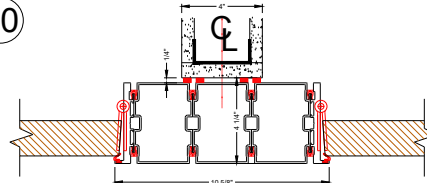
DF Pivot at Flush Start
Wood Hinge Dr

59



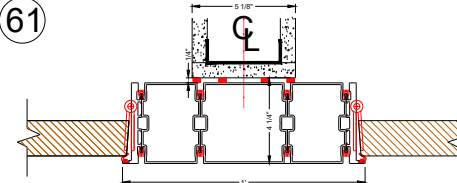
DF Pivot at 4" Bypass
Wood Hinge Dr

60



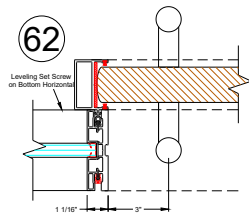
In-Line Posts at 4" Drywall Bypass
Back to Back Wood Hinge Drs

61



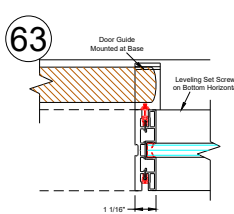
In-Line Posts at 5 1/8" Drywall Bypass
Back to Back Wood Hinge Drs

62



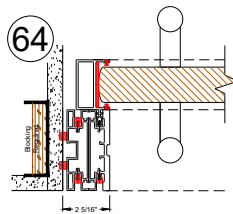
Panel to DF Receiver
Wood Slider

63



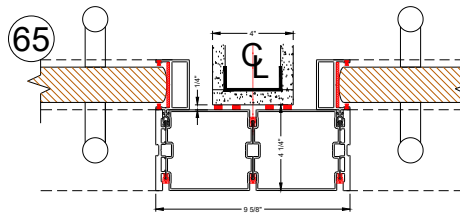
Panel to DF Seal
Wood Slider

64



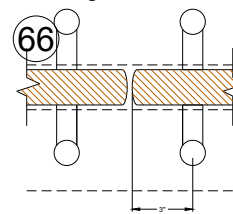
Receiver at Flush Start
Wood Slider

65



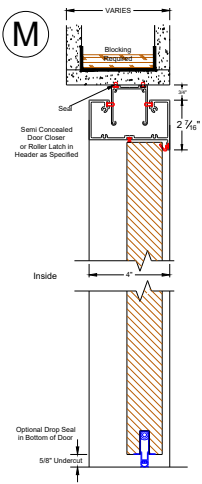
(2) 5" In-Line Posts at 4" Drywall Bypass
Back to Back Wood Sliders

66



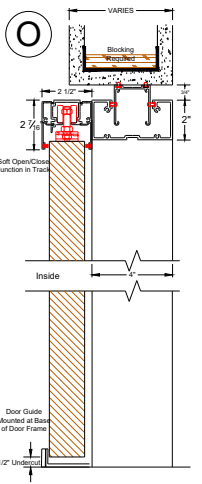
Double Door Pulls
Wood Slider

M



Wood Hinged Door

O



Wood Sliding Door

NO.	DATE	ISSUE/REVISION

0

5

