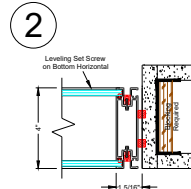
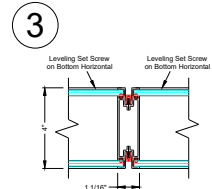


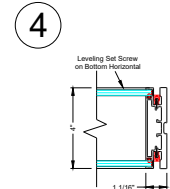
1 Recessed Wall Start



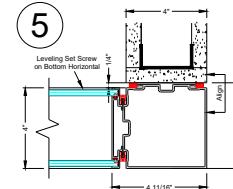
2 Flush Wall Start



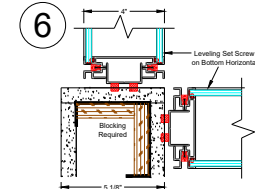
3 Panel Connection



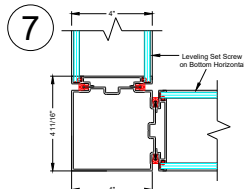
4 Finished End



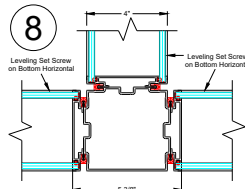
5 Finished End at Drywall Bypass



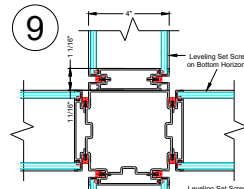
6 2-Way Connection at Drywall Corner



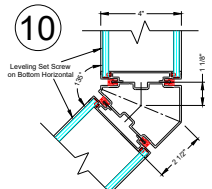
7 2-Way Post



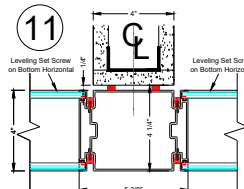
8 3-Way Post



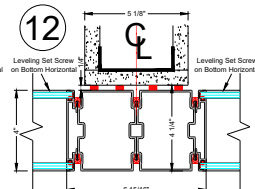
9 4-Way Connection



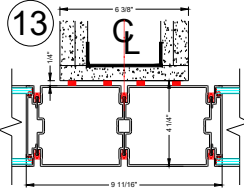
10 135 Degree Post



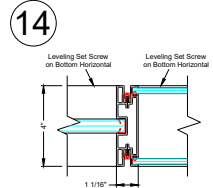
11 5" In-Line Post at 4" Drywall Bypass



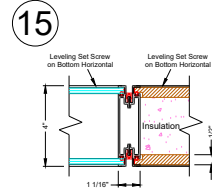
12 (2) 4" In-Line Posts at 5 1/8" Drywall Bypass



13 (2) 5" In-Line Posts at 6 3/8" Drywall Bypass

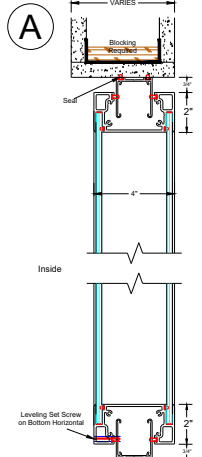


14 Single to Double Glazed Panel Connection

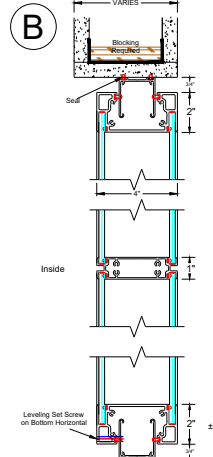


15 Double Glazed to Double Solid Panel Connection

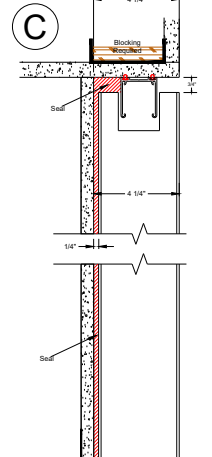
Note : System shown flush to corridor side of soffit and sheetrock wall. System can also be setback or centered if so desired. Blocking required either way.



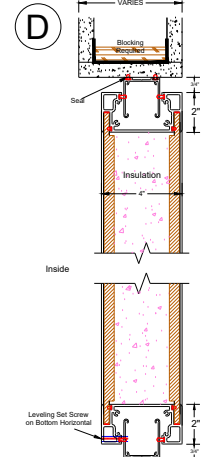
A Double Glazed Panel



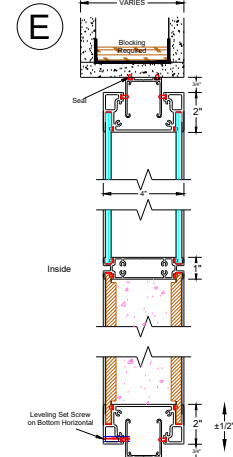
B Double Glazed Panel with Transom



C Post Condition @ Drywall Return



D Double Solid Panel



E Double Solid Panel with Glass Transom

NO.	DATE	ISSUE/REVISION
0		

0

