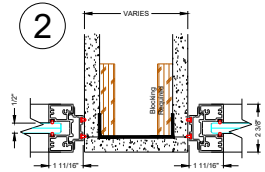
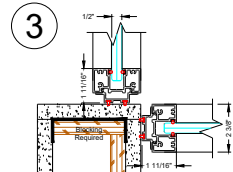


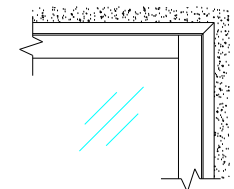
Wall Start



Wall Start at Demising Wall

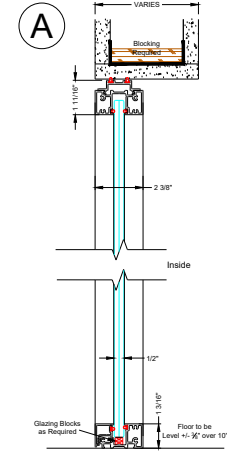


Wall Start at Drywall Corner

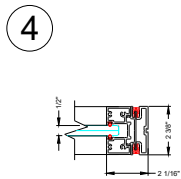


Wall Start to Ceiling Track Elevation

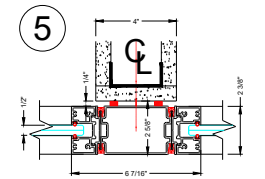
Note : System shown flush to corridor side of soffit and sheetrock wall. System can also be setback or centered if so desired. Blocking required either way.



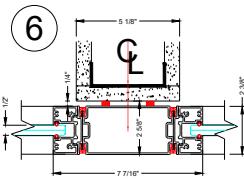
Glass Panel Vertical Section



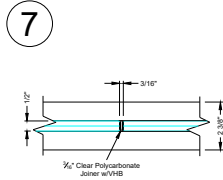
Finished End



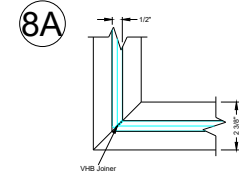
3" In-Line Post at 4" Drywall Bypass



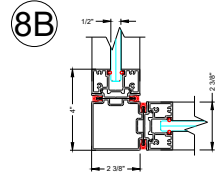
4" In-Line Post at 5 1/8" Drywall Bypass



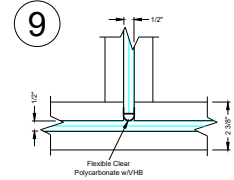
Butt Glazed Glass Connection



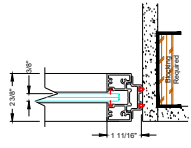
Butt Glazed Corner Connection



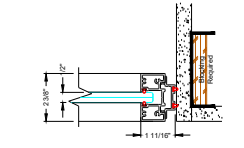
2-Way Post



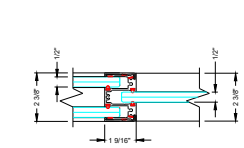
Butt Glazed 3-Way Connection



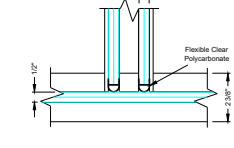
3/8" Glass



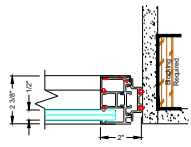
1/2" Glass



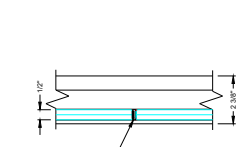
Double Glazed to Single Glazed Connection



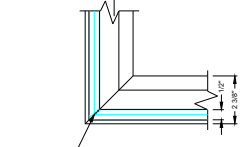
Single Glazed Front with Double Glazed Return



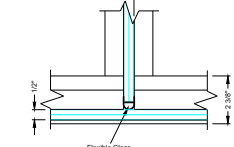
Flush to Front



Flush to Front Butt Glazed Connection



Flush to Front Corner Connection

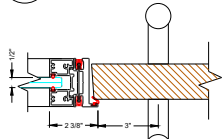


Flush to Front 3-Way Connection

NO.	DATE	ISSUE/REVISION
0		

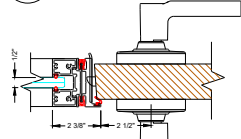
DATE
January 2022
SCALE
1/8" = 1'-0"
DESIGNER/REVISIONS
PROJECT NO.
PROJECT LEADER
COORDINATOR
CHECKED BY
DATE FILED
ISSUE NO.
1
SHEET NO.

43A



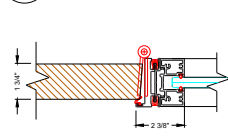
Panel to DF Keeper
Wood Hinge Dr

43B



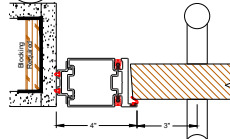
Panel to DF Keeper
Wood Hinge Dr

44



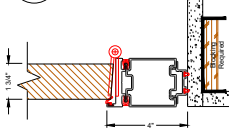
Panel to DF Hinge
Wood Hinge Dr

45



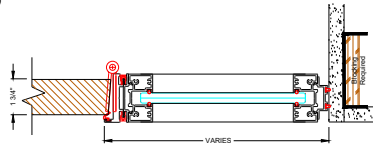
DF Keeper at Drywall
Wood Hinge Dr

46A



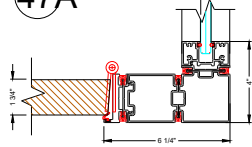
DF Hinge at Drywall
Wood Hinge Dr

46B



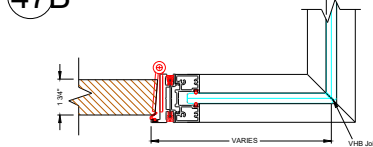
DF Hinge at Drywall with Sidelight
Wood Hinge Dr

47A



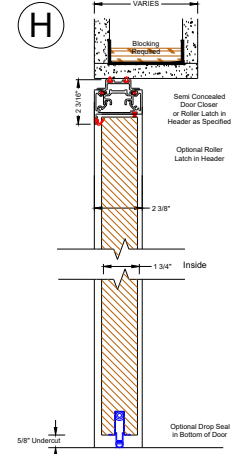
DF Hinge at 2-Way Post
Wood Hinge Dr

47B



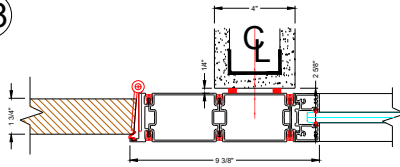
DF Hinge at Butt Glazed Corner
Wood Hinge Door

H



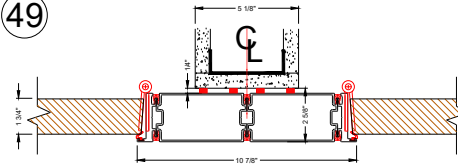
Wood Hinge Dr
Vertical Section

48



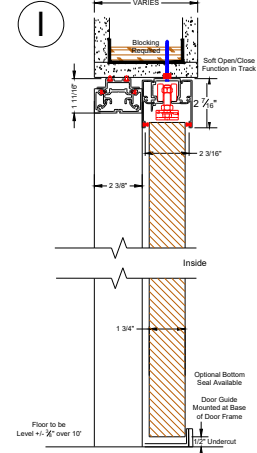
DF Hinge at 4" Bypass
Wood Hinge Door

49



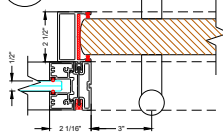
DF Hinge at 5 1/8" Bypass Glass
Back to Back Wood Hinge Doors

I



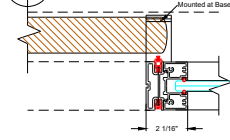
Wood Slider
Vertical Section

50



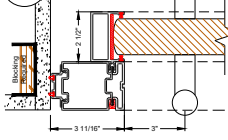
Panel to DF Receiver
Wood Slider

51



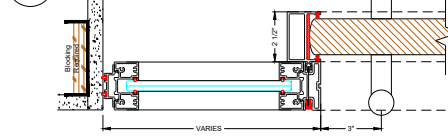
Panel to DF Seal
Wood Slider

52A



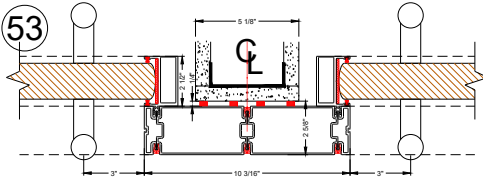
Receiver at Drywall
Wood Slider

52B



Receiver at Drywall with Sidelight
Wood Sliding Door

53



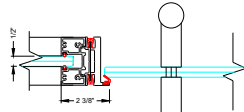
DF Receiver at 5 1/8" Bypass Glass
Back to Back Wood Sliders

Table with 2 columns: NO., DATE, ISSUE/REVISION

0

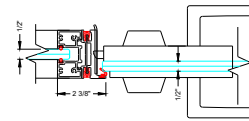
5

54A



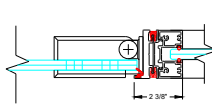
Panel to DF Keeper Glass Hinge Door

54B



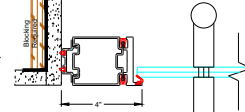
Panel to DF Keeper Glass Hinge Door

55



Panel to DF Pivot Glass Hinge Door

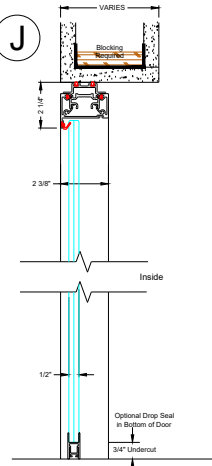
56



DF Keeper at Drywall Glass Hinge Door

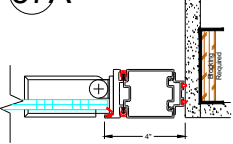
Note : System shown flush to corridor side of soffit and sheetrock wall. System can also be setback or centered if so desired. Blocking required either way.

J



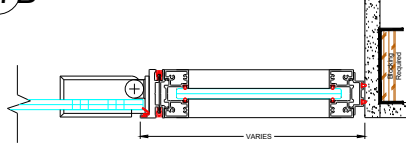
Glass Hinged Dr Vertical Section

57A



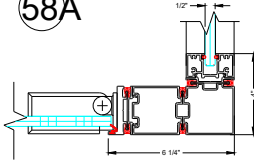
DF Hinge at Drywall Glass Hinge Door

57B



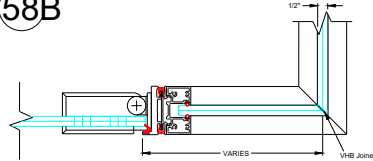
DF Hinge at Drywall with Sidelight Glass Hinge Door

58A



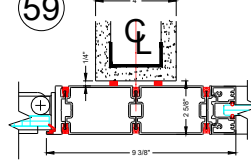
DF Hinge at 2-Way Post Glass Hinge Door

58B



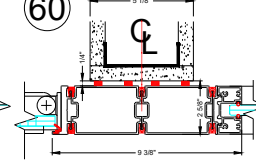
DF Hinge at Butt Glazed Corner Glass Hinge Door

59



DF Hinge at 4" Bypass Glass Hinge Door

60



DF Hinge at 5 1/8" Bypass Glass Hinge Door



NO.	DATE	ISSUE/REVISION
0		

0

Quantum Single Butt-Glazed Standard Glass Hinge Door Details

Job Specific Details to Supersede Typical Standard Details

DATE: January 2022
SCALE: 1/4" = 1'-0"
PROJECT NO.:
PROJECT LEADER:
JOB DRAWER:
CHECKED BY:
JOB FILE NAME:

6