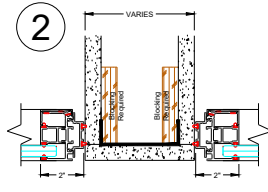
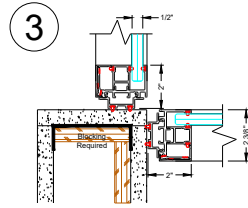


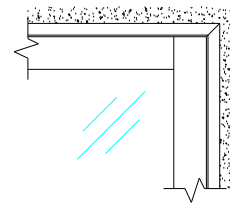
Wall Start



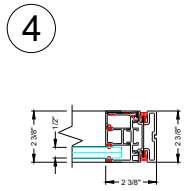
Wall Start at Demising Wall



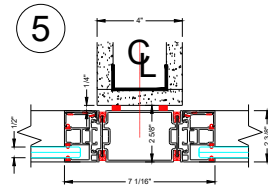
Wall Start at Drywall Corner



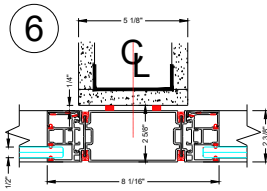
Wall Start to Ceiling Track Elevation



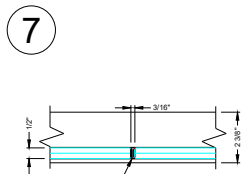
Finished End



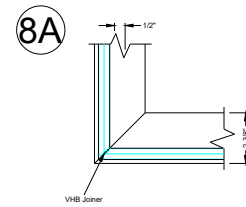
3" In-Line Post at 4" Drywall Bypass



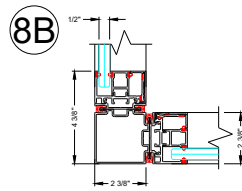
4" In-Line Post at 5 1/8" Drywall Bypass



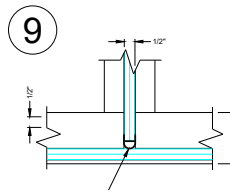
Butt Glazed Glass Connection



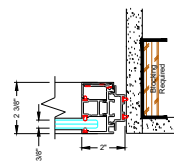
Butt Glazed Corner Connection



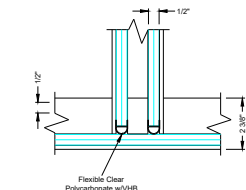
2-Way Post



Butt Glazed 3-Way Connection

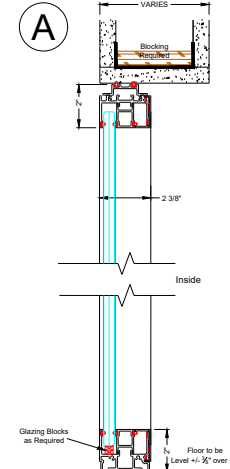


3/8" Glass



Single Glazed Front with Double Glazed Return

Note : System shown flush to corridor side of soffit and sheetrock wall. System can also be setback or centered if so desired. Blocking required either way.



Glass Panel Vertical Section

Glass shown as 1/2", can also utilize 3/8" tempered glass within doors.

The information is the property of Inverness Technology, Inc. and is not to be used, copied, or reproduced in any form without the express written consent of Inverness Technology, Inc. This document is for informational purposes only. Inverness Technology, Inc. is not responsible for any errors or omissions.

| | |
|----|--|
| 1 | |
| 2 | |
| 3 | |
| 4 | |
| 5 | |
| 6 | |
| 7 | |
| 8 | |
| 9 | |
| 10 | |
| 11 | |

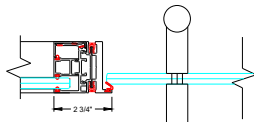
NO. DATE ISSUE/REVISION

CHECKED BY:

0

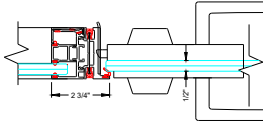


54A



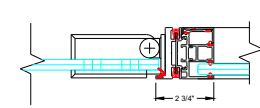
Panel to DF Keeper Glass Hinge Door

54B



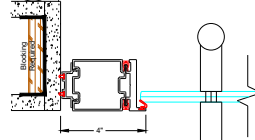
Panel to DF Keeper Glass Hinge Door

55



Panel to DF Pivot Glass Hinge Door

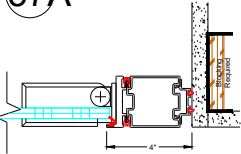
56



DF Keeper at Drywall Glass Hinge Door

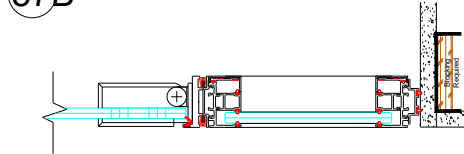
Note : System shown flush to corridor side of soffit and sheetrock wall. System can also be setback or centered if so desired. Blocking required either way.

57A



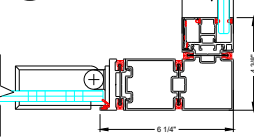
DF Hinge at Drywall Glass Hinge Door

57B



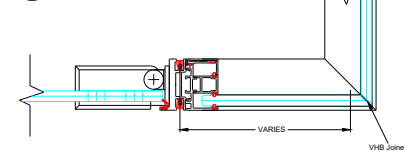
DF Hinge at Drywall with Sidelight Glass Hinge Door

58A



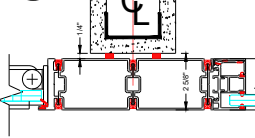
DF Hinge at 2-Way Post Glass Hinge Door

58B



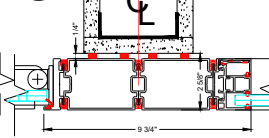
DF Hinge at Butt Glazed Corner Glass Hinge Door

59



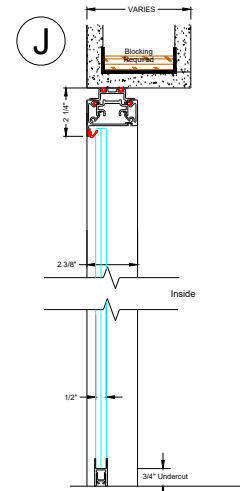
DF Hinge at 4" Bypass Glass Hinge Door

60



DF Hinge at 5 1/8" Bypass Glass Hinge Door

J



Glass Hinged Dr Vertical Section

This document is the property of Invision International, Inc. and is not to be reproduced, stored in a retrieval system, or transmitted in any form or by any means, electronic, mechanical, photocopying, recording, or by any information storage and retrieval system, without the prior written permission of Invision International, Inc.

Revision table with columns for NO., DATE, ISSUE/REVISION, and CHECKED BY.

NO. DATE ISSUE/REVISION CHECKED BY

0

DATE: November 2022
SCALE: 1/4" = 1'-0"
DRAWING REFERENCE:
PROJECT NO:
PROJECT LEADER:
DESIGNER:
CHECKED BY:
CADD FILE NAME:

DRAWING NO:
SHEET NO: 6