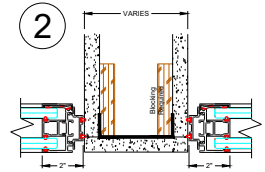
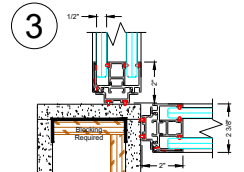


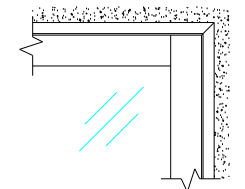
Wall Start



Wall Start at Demising Wall

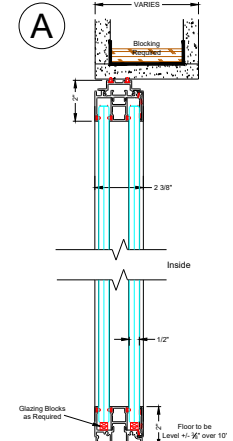


Wall Start at Drywall Corner



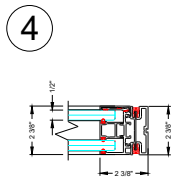
Wall Start to Ceiling Track Elevation

Note : System shown flush to soffit and sheetrock wall. System can also be setback or centered if so desired. Blocking required either way.

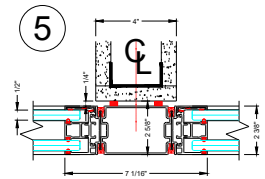


Glass Panel Vertical Section

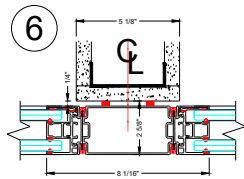
Glass shown as 1/2", can also utilize 3/8" tempered glass within doors.



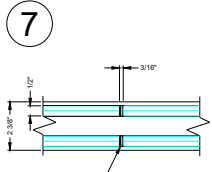
Finished End



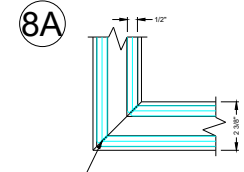
3" In-Line Post at 4" Drywall Bypass



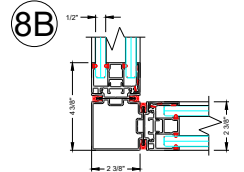
4" In-Line Post at 5 1/8" Drywall Bypass



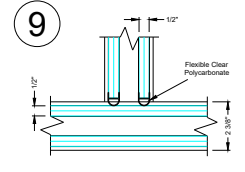
Butt Glazed Glass Connection



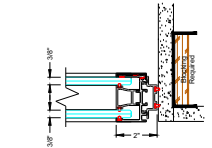
Butt Glazed Corner Connection



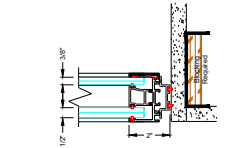
2-Way Post



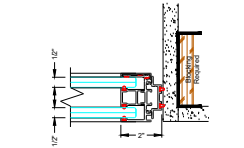
Butt Glazed 3-Way Connection



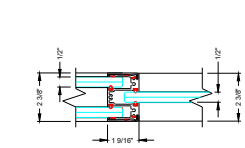
Both Lites 3/8" Glass



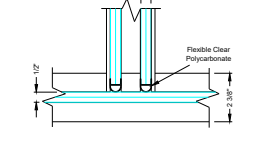
One Lite 3/8" Glass
One Lite 1/2" Glass



Both Lites 1/2" Glass



Double Glazed to Single Glazed Connection



Single Glazed Front with Double Glazed Return

NO.	DATE	ISSUE/REVISION

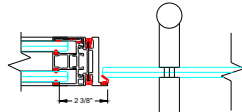
0

DATE	

1

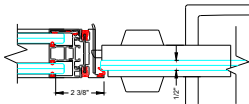


54A



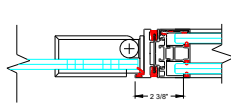
Panel to DF Keeper Glass Hinge Door

54B



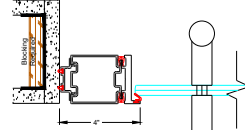
Panel to DF Keeper Glass Hinge Door

55



Panel to DF Pivot Glass Hinge Door

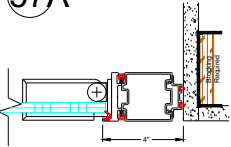
56



DF Keeper at Drywall Glass Hinge Door

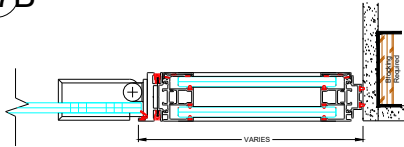
Note : System shown flush to corridor side of soffit and sheetrock wall. System can also be setback or centered if so desired. Blocking required either way.

57A



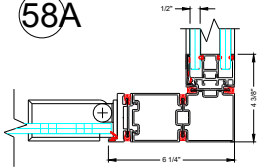
DF Hinge at Drywall Glass Hinge Door

57B



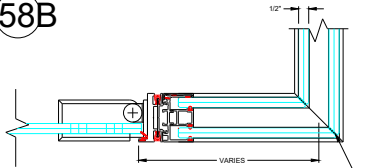
DF Hinge at Drywall with Sidelight Glass Hinge Door

58A



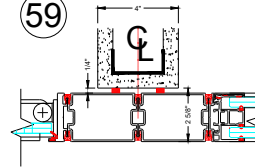
DF Hinge at 2-Way Post Glass Hinge Door

58B



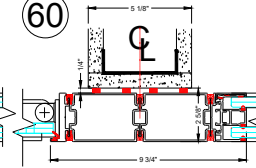
DF Hinge at Butt Glazed Corner Glass Hinge Door

59



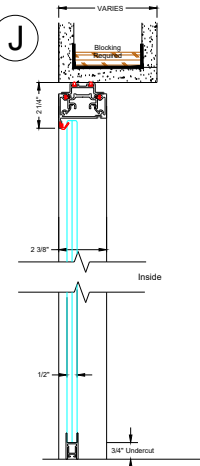
DF Hinge at 4" Bypass Glass Hinge Door

60



DF Hinge at 5 1/8" Bypass Glass Hinge Door

J



Glass Hinged Dr Vertical Section

NO.	DATE	ISSUE/REVISION
0		

0