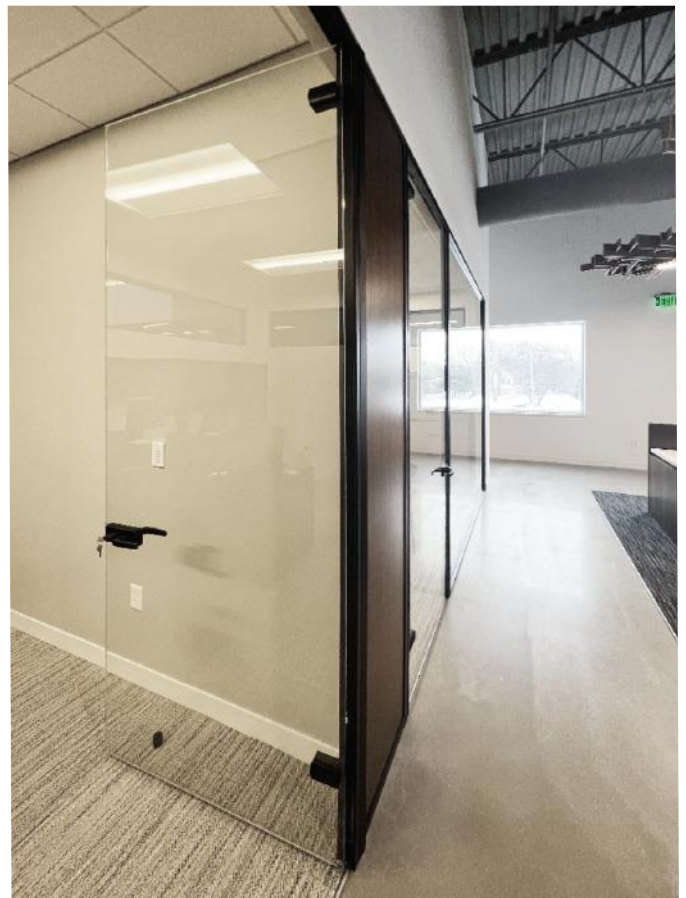
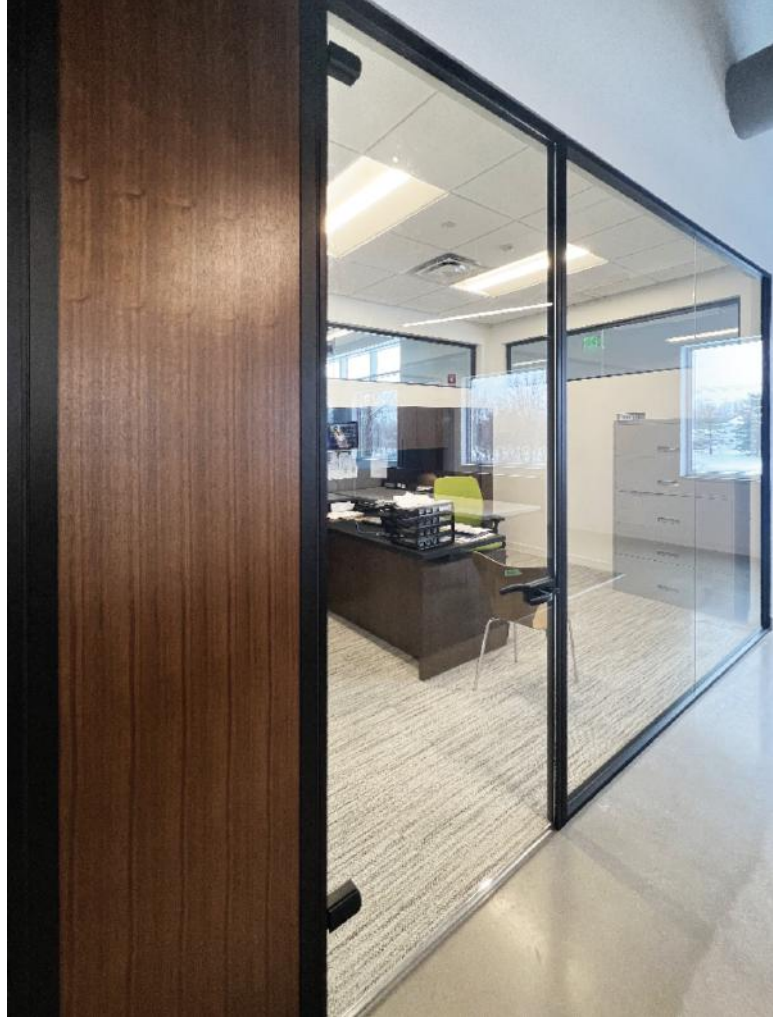


FRAMELESS GLASS HINGE DOORS

- + 1/2" or 3/8" clear tempered glass
- + 34-36 STC for glass only
- + Available as hold open or non-hold open
- + Available with ladder pulls and lever sets, locking or non-locking
- + Integrated door frame stop with acoustic seals
- + Engineered to order domestically with a 4-6 week lead time



© 2022 INFINIUM Wall Systems, Inc. All Rights Reserved.

STANDARD HARDWARE

FRAMELESS GLASS HINGE DOORS

© 2022 INFINIUM Wall Systems, Inc. All Rights Reserved.

DOOR HARDWARE OPTIONS

CUSTOM HARDWARE SOLUTIONS

- + INFINIUM has a wide array of beautiful door hardware options that work with any of our wall systems. In addition to our standard offerings, we work with all major hardware manufacturers to provide you with an unlimited selection to fit your project needs. No matter what your requirements may be, our in-house team of engineers and project managers will work together to provide a custom hardware solution that's right for you.

STANDARD HARDWARE PACKAGE

SH371 INFINIUM PROPRIETARY HINGE HARDWARE

- + 3-1/2" Wide x 3-7/16" Tall



LEVER SETS

LK500 PASSAGE SET

- + Suitable for 8mm & 10mm (5/16" & 3/8") glass.
 - * For 12mm (1/2") glass door use, please specify upon ordering.



LK-500S LOCK SET WITH CYLINDER

- + Suitable for 8mm & 10mm (5/16" & 3/8") glass.
 - * For 12mm (1/2") glass door use, please specify upon ordering.
- + Interior with thumb-turn and exterior with cylinder & security rose cover (unlocked by key from outside, or the thumb-turn inside to open the door.)



STANDARD HARDWARE

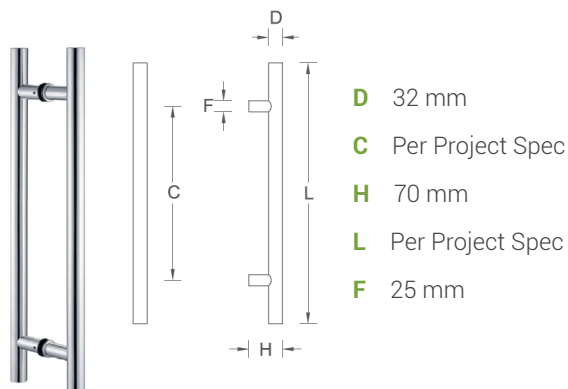
FRAMELESS GLASS HINGE DOORS

© 2022 INFINIUM Wall Systems, Inc. All Rights Reserved.

LADDER PULLS

DPA 4000 NON-LOCKING LADDER PULL

- + With advance notification, the capability to swap non-locking with locking pulls can be achieved Day 2 utilizing non-locking pulls that accommodate the same size insert requirements for pull mounts on glass.

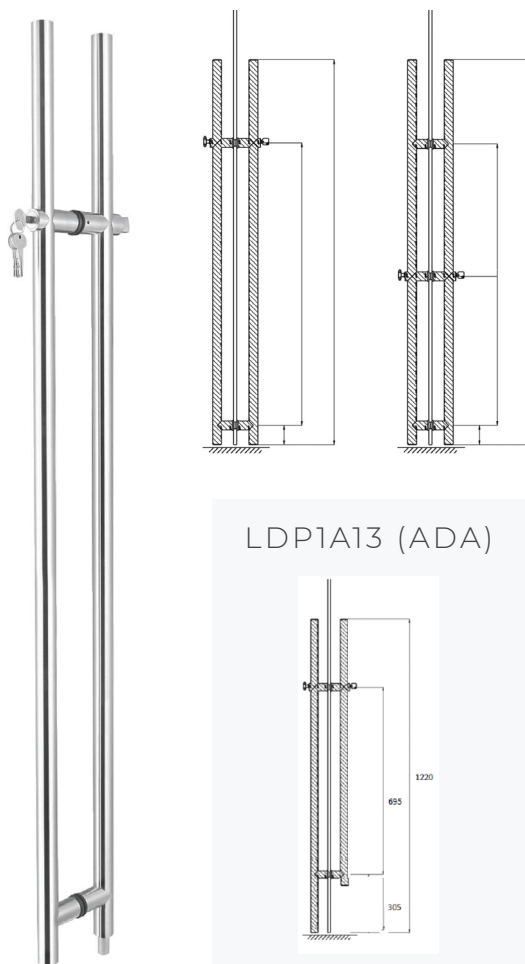


LDPA LOCKING LADDER PULL

- + Heavy duty stainless steel construction
- + Key-operated from exterior; turnknob from interior
- + Accommodates door thickness 8-19mm range
- + 16mm steel deadbolt with 32mm throw
- + Floor locking standard, head and dual locking available
- + Bolt location: 64mm from face of door to centerline of bolt
- + Available in SFIC, side-bitted, or standard SC cylinder options

Item	B	A
LDP1-1200	925mm	1200mm
LDP1-1500	1250mm	1500mm

Item	C	B	A
LDP1-1800	925mm	725mm	1800mm
LDP1-2000	925mm	925mm	2000mm
LDP1-2400	1175mm	1075mm	2400mm



LDP1A13 (ADA)

STANDARD HARDWARE

FRAMELESS GLASS HINGE DOORS

© 2022 INFINIUM Wall Systems, Inc. All Rights Reserved.

DROP SEAL

GLASS BOTTOM DROP SEAL

- + Model for glass doors to be fixed below the glass. Equipped with a soft silicone seal, its internal profile is removable even once installed. Available for glasses of 10 - 12 - 12,7mm thick and in different profile finishing.



ELECTRIC | HIGH-SECURITY HARDWARE

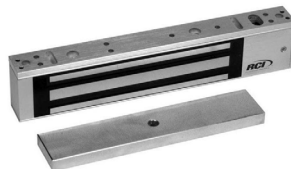
ELECTRIC STRIKE

- + Equipped with a mortise or cylindrical lockset with up to 3/4" latchbolt projection without deadbolt.
- + Electrical actuation unlocks the keeper, releasing the latchbolt so the door may be opened without operating the latch itself.



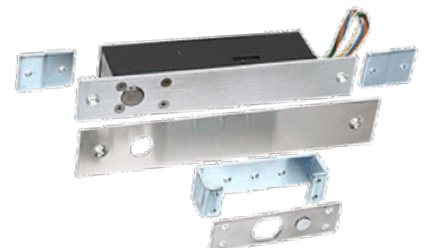
SURFACE-MOUNTED MAGLOCKS

- + 500 lbs. holding force
- + 750 lbs. holding force



CONCEALED OVERHEAD SOLENOID BOLT LOCK

- + Dual Monitoring Lock
- + Selectable Locking Time
- + Top rail options available as needed
- + Fully Automatic 12/24V DC Selection
- + CE Listed



ROOM SCHEDULERS | CARD READERS

- + Upon specification, INFINIUM will help coordinate the installation of power for room schedulers and/or card readers provided by others, and integrate these features into our wall systems.